
Novel polymeric materials for cost-efficient solar-thermal systems

Gernot M. Wallner, R. Buchinger

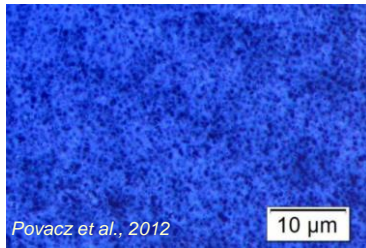
TASK 54

International Sustainable Energy
Conference (ISEC)

Graz, Austria
3-5 October 2018

New Materials – Tailor-made Absorber Materials

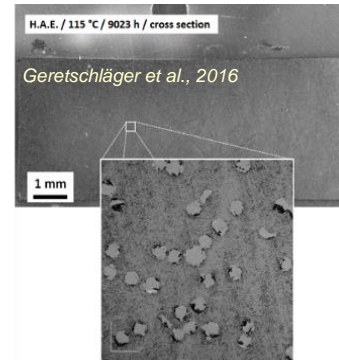
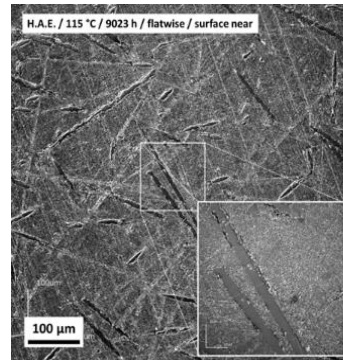
POLYPROPYLENE (PP)



Blockcopolymer +
Carbon black + AO + HALS



POLYAMIDE+GLASS FIBER (PA-GF)



various suppliers: e.g., Radici, Schulman, BASF

POLYPHENYLENESULFIDE (PPS)



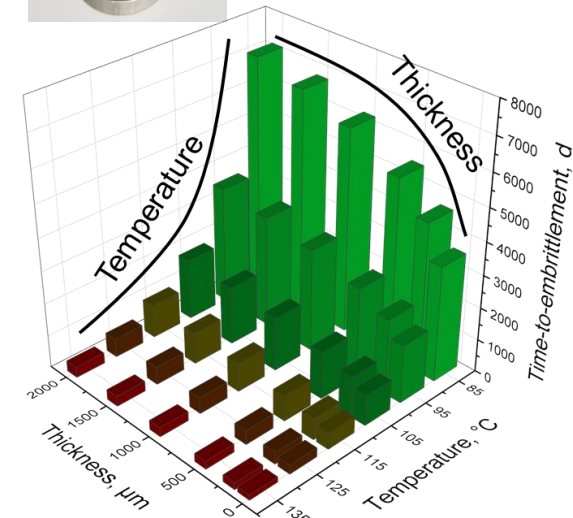
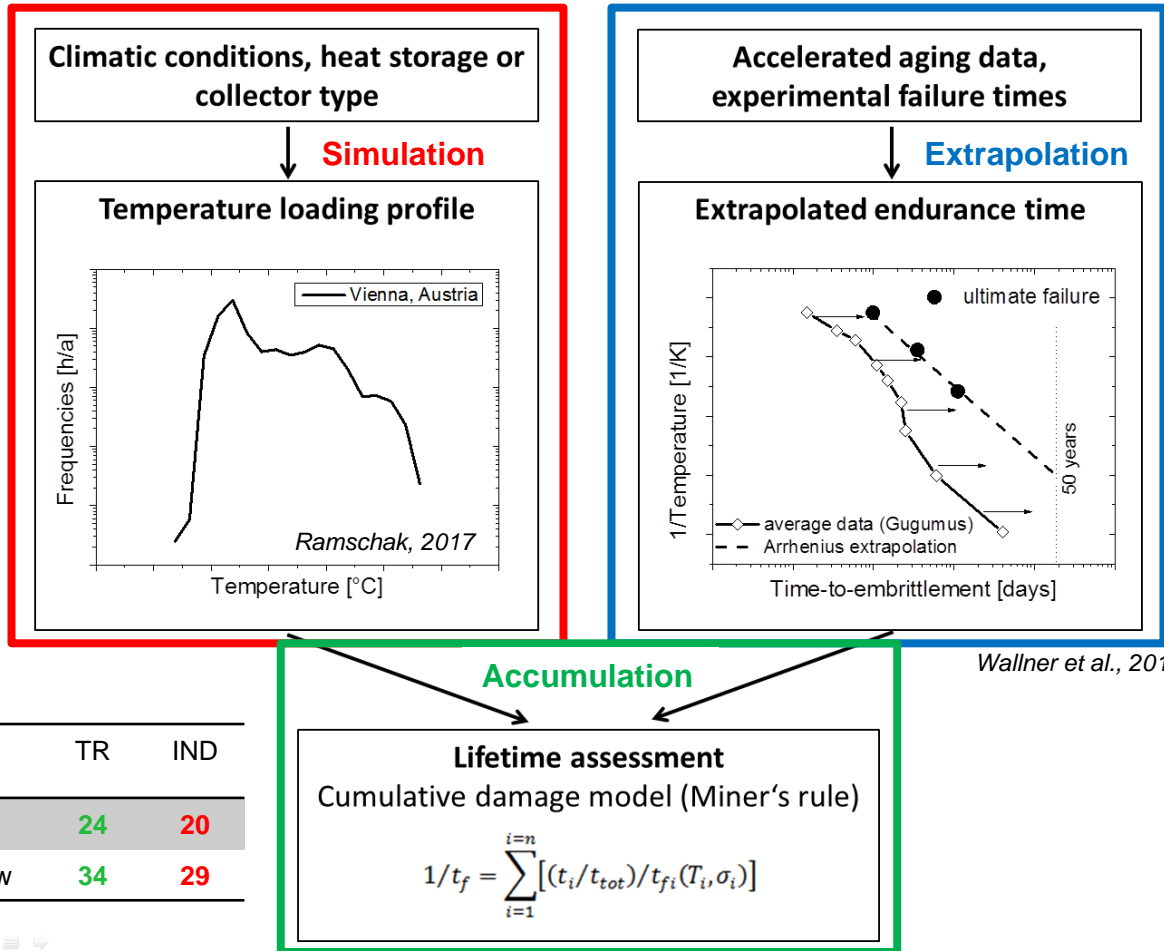
PPS + PO impact modifier



Material	T _{Glass} , °C	T _{Melt} , °C	Modulus, MPa RT / 125°C	Strength @RT, MPa	Solar thermal system
PP	-10	165	1200 / 200	25	Low-pressure systems, T _{max} ~100°C
PA-GF	-40 to 60	260	5000 / 2000	100	Pressurized systems (< 6bar), T _{max} ~100°C
PPS	100	280	1400 / 200	50	Low-pressure systems, T _{max} ~150°C

New Materials – Testing and qualification methods

CUMULATIVE DAMAGE APPROACH (LOW MECHANICAL STRESS)



years	TR	IND
PP old	24	20
PP new	34	29

Based on: Diss Povacz (2014); Diss Grabmann (2018)

Process Technologies – Continuous manufacturing

EXTRUSION OF SHEETS AND PIPES

Hollow sheets

aventasolar



Pipes

MAGEN
BCO-ENERGY

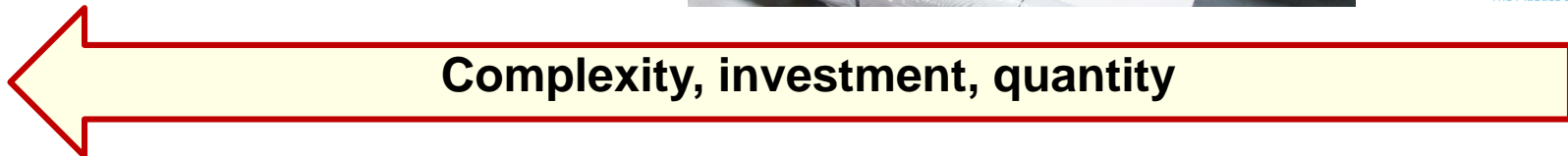


Sheets / liners

SUNLUMO
One sun.
One world.
One collector.



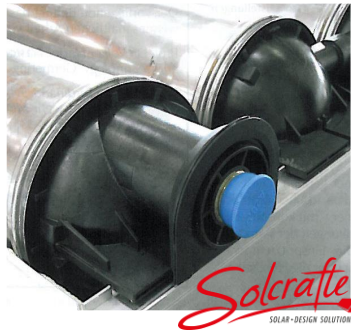
agru
The Plastics Experts.



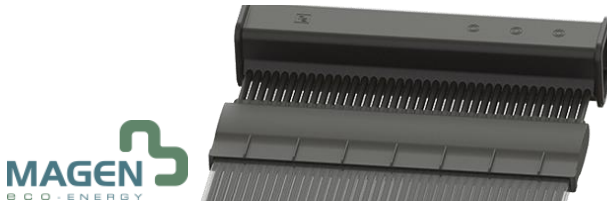
Process Technologies – Discontinuous manufacturing

INJECTION OR COMPRESSION MOULDING

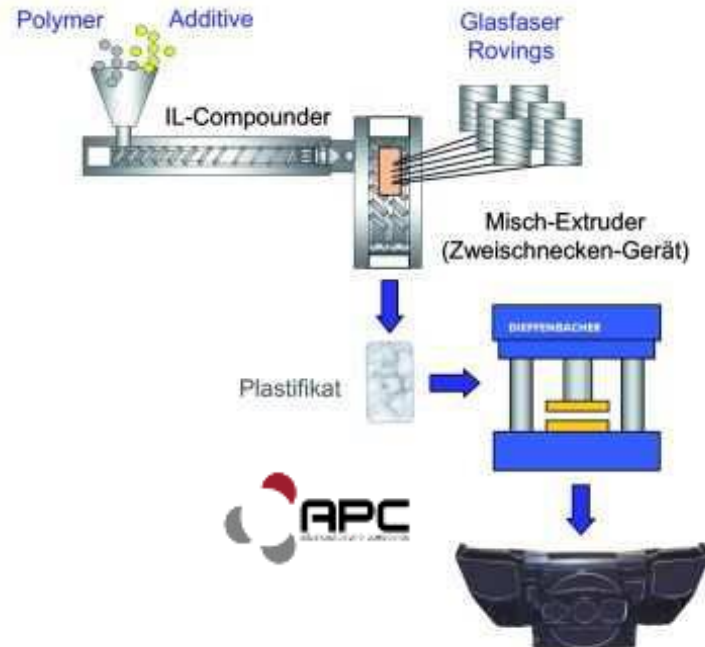
Injection moulding



aventa solar



Compression moulding

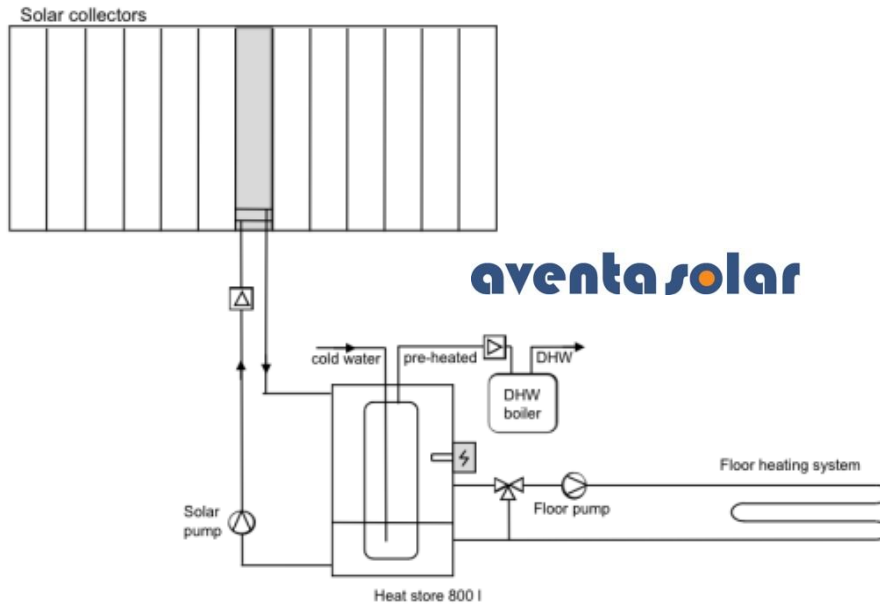


Complexity, investment, costs

Complexity, investment, quantity

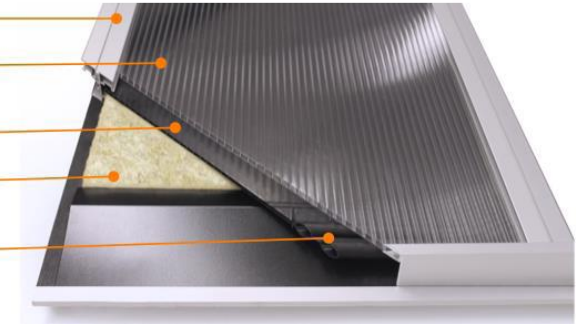
Solar-thermal systems – Hot Water & Space Heating

AVENTA SOLAR – PUMPED DRAINBACK SYSTEM



aventa solar

- Anodized aluminium frames
- Polycarbonate twin-wall sheet, collector glazing
- Polymeric absorber (PPS)
- Thermal insulation
- Absorber endcap with integrated manifold



Rekstad, 2015 (AventaSolar collector system, Task39 Info sheet B16)

$$LCOH_{sol} = 0,035 - 0,099 \text{ €/kWh}$$

Solar-thermal systems – Domestic Hot Water

SUNLUMO – PUMPED “LOW PRESSURE” SYSTEM

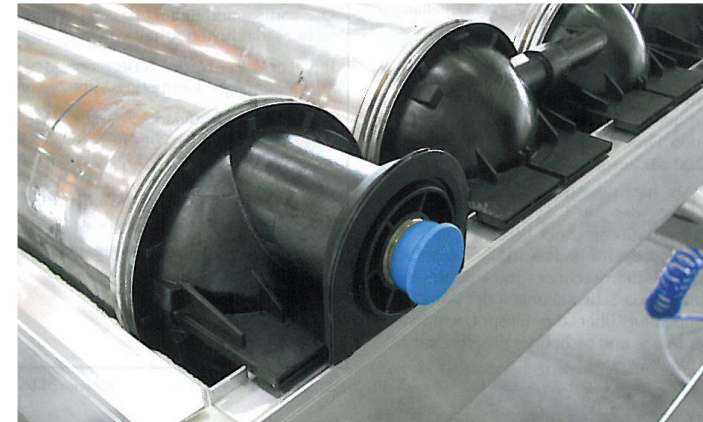
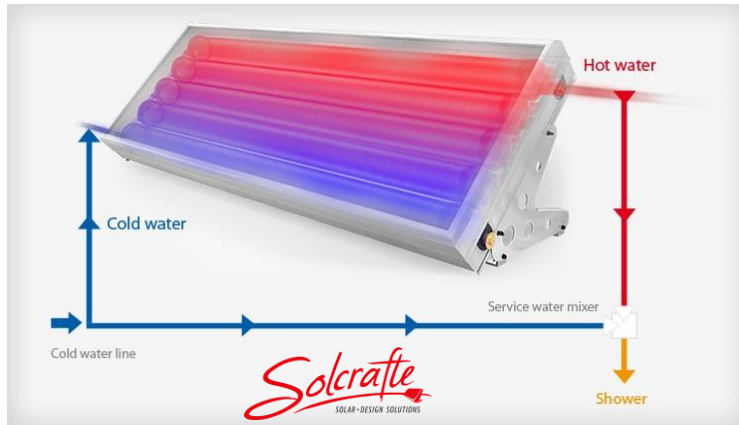


from 20 parts brass
to 10 parts plastic

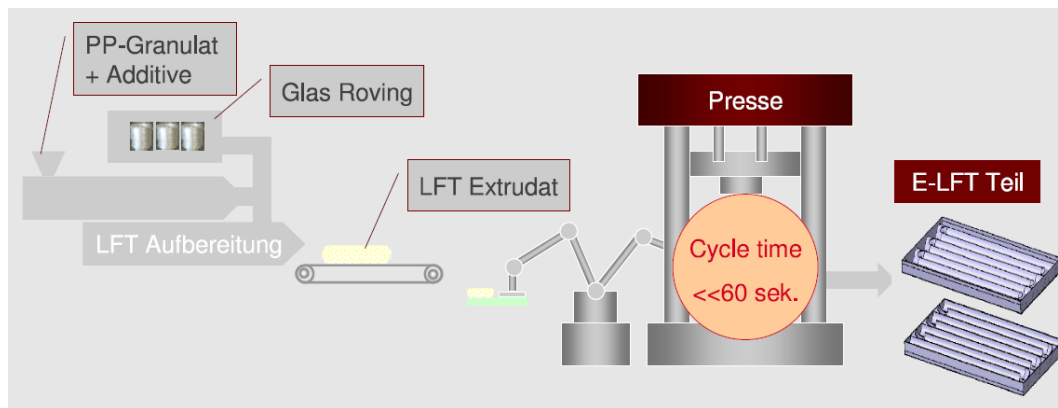
$LCOH_{sol} = 0,01 - 0,03 \text{ €/kWh, if } > 100.000 \text{ systems/year}$

Solar-thermal systems – Domestic Hot Water

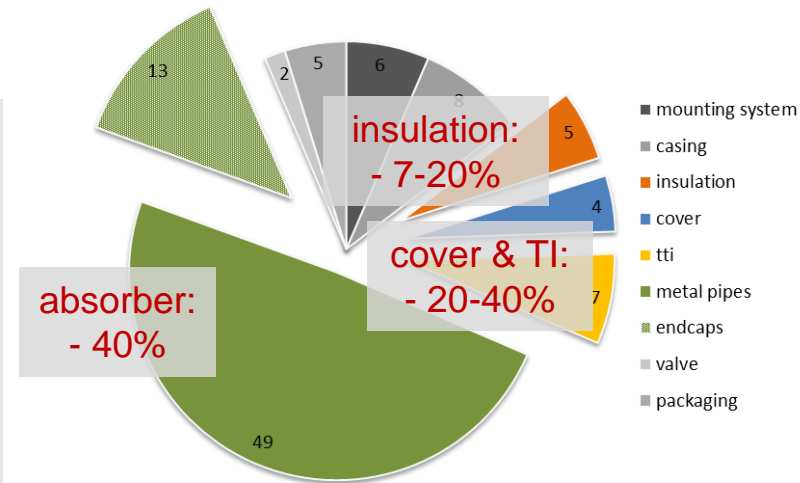
GREENONE TEC – INTEGRATED STORAGE COLLECTOR



from > 100 parts/ to 7 parts/ISC



cost distribution ISC [%]



Comparison of LCOH – Impact of new materials

